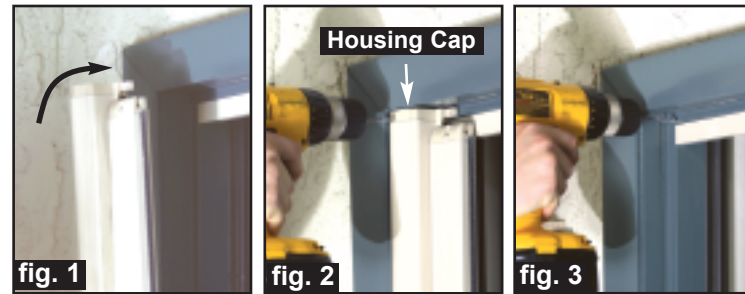


Single Door System Installation

- 1) Refer to the following Instructions on previous page:
 - "Measuring Door Opening"
 - "Rail Trim Molding"
 - "Sill Adapter & Rail Trim Molding Measuring • Cutting • Installing"
 - "Sill Adapter Installation"
 - "Rail Trim Molding Installation"
2. Locate mounting position and fit on door frame (figure 1).
3. Using a 7/64" drill bit, mark for pilot hole location (figure 2) using the Housing Cap's mounting hole as a guide.
4. Remove unit and drill pilot hole (figure 3).
5. Relocate door system and install #6 x 2-1/2" screw.



6. Position bottom of door system.
7. Repeat process for the bottom of system using step 2 from above (figure 4).
8. Move door system aside and drill pilot hole into Sill Adapter (figure 5).



9. Relocate system and install #6 x 2-1/2" screw (figure 6).
10. Tighten top and bottom Housing screws.

Measuring • Cutting • Installing Rails

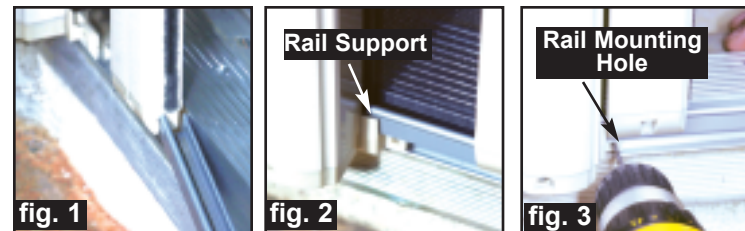
Rail Measurement

Measure from the inside of Housing to the inside edge of opposing door frame (Measure both Top & Bottom) see below.

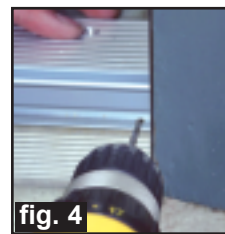


Cutting And Installing Rails

1. Remove 48" Rails and cut to measured size.
2. Insert Bottom Rail into Pull Bar Guide (figure 1).
3. Carefully slide Rail into Housing Cap rail support (figure 2).
4. Drill a 7/64" pilot hole through Rail and into Sill Adapter using the rail mounting in Housing Cap as guide (figure 3).

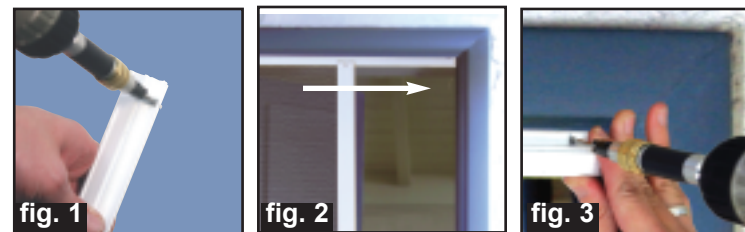


5. Install # 6 x 3/4" self-tapping screw and fasten Rail into place.
6. Ensure Rail is flush on Sill Adapter's opposite end lip then drill a 7/64" pilot hole through Rail and into Sill Adapter (Fig. 4).
7. Install # 6 x 3/4" self-tapping screw.
8. Repeat steps 6-7 for center of Rail.



Top Rail

1. On the door jamb side of the Rail, drill a 3/16" hole, 1/4" from the end of the Rail (figure 1).
2. Repeat steps 2-5 from above.
3. Extend Pull Bar to jamb to align top Rail (figure 2).
4. Mark position of Rail and drill 7/64" pilot hole into Rail Trim Molding (figure 3).



5. Install self-tapping screw and adjust Rail if necessary.
6. Check door system for smooth operation.
7. Install Housing Screw hole plugs (2) at top and bottom.

IMPORTANT:

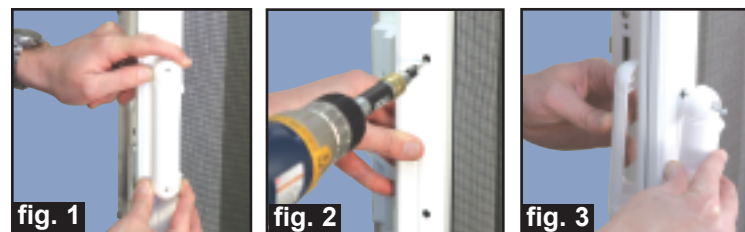
Apply a thin coat of Silicone Spray lubricant to top and bottom Rails and check for smooth operation.



Handle Installation

The handle can be placed along the height of the Pull Bar. Locate the handle so it will not interfere with the existing door's handle or hardware.

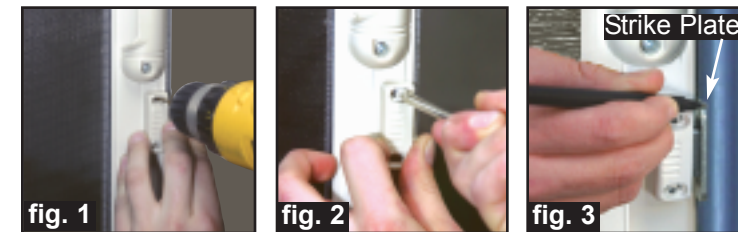
1. Using handle as template, mark holes on Pull Bar (figure 1).
2. Drill 1/8" hole straight through Pull Bar (figure 2).
3. Install Handle using provided #6 x 1-3/4" screws (figure 3).
4. Install Handle Screw Hole Plugs (2).



Magnet Installation

Positioning of the Magnet assembly can vary depending on the application. The Magnet can be placed either on the Pull Bar or the door frame. For this example, the Magnet was placed on the Pull Bar.

1. Position Magnet on Pull Bar and using the magnet assembly as a guide, drill 7/64" pilot holes (figure 1).
2. Install #6 x 3/4" screws loosely for adjustment (figure 2).
3. Place Striker Plate on Magnet, align and mark position of Striker Plate on door frame (figure 3).



4. Drill 1/16" holes into door frame and fasten Striker Plate.



Single Door

Double Door

CRL
C.R. LAURENCE CO., INC.

2503 E. Vernon Avenue
Los Angeles, CA 90058-1897

(800) 421-6144
(800) 262-3299 Fax

© 2004, C.R. Lawrence Co., Inc.

CRL

C.R. LAURENCE CO., INC.

Retractable Screen Door Kit Mounting Instructions for Double Swing and Single Door Applications

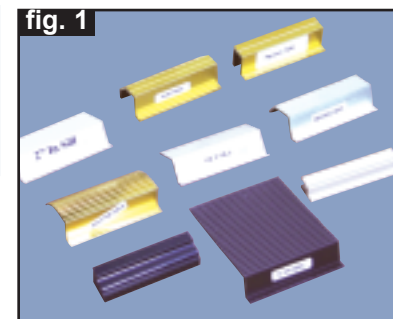
Required Tools

- #1 & #2 Phillips Screw Driver • Measuring Tape • Utility Knife
- Electric Drill • 1/16", 7/64", 1/8", 3/16" - Drill Bits • 82° Countersink
- Chop Saw • Safety Glasses • Ear Protection
- Sill Adapter Sample Kit

Sill Adapter Selection • Measuring

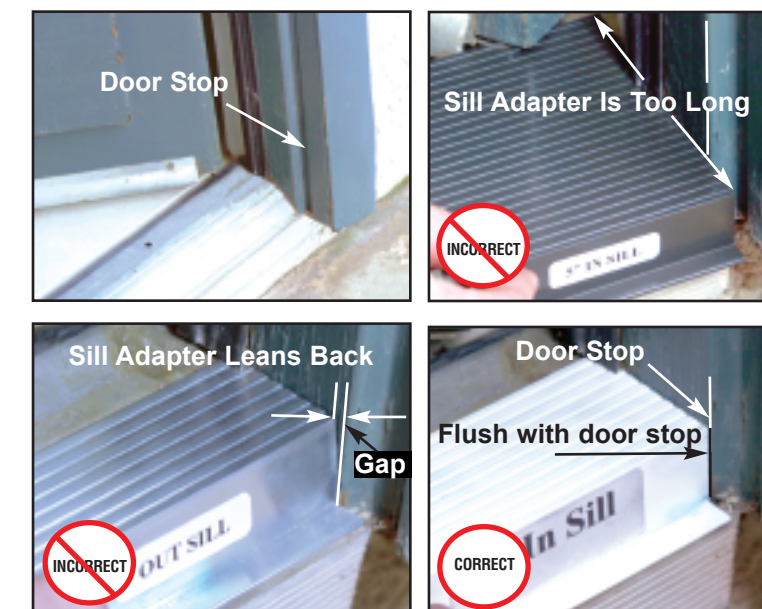
NOTE:
The correct Sill Adapter must be selected prior to measuring.

Sill Sample Kit Includes:
seven adapters, one rail sample and one rail trim molding sample. (figure 1)



Sill Adapter Selection

To select the correct Sill Adapter, place each sample on the existing sill. The correct Sill Adapter must be flush to the door frame. The Rail mounting surface on Sill Adapter must align to the door stop on door frame (see examples below).



Measuring Door Opening

Measured height is taken across the opening in three locations using the selected sill adapter sample as shown below:



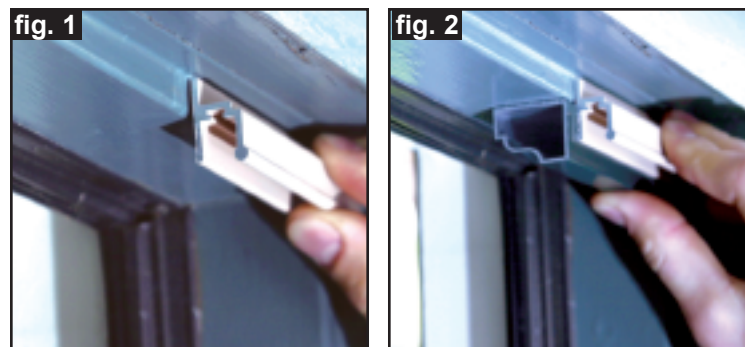
Measure from the lip of the Sill Adapter Sample to the inside top of the door frame.

The Shortest dimension minus 1/8" will be used to build the Retractable Screen Door System.

Example: 80-5/8" - 1/8" = 80-1/2"

Rail Trim Molding

To determine if Rail Trim Molding is required, place Rail Sample on the top edge of the door stop on door frame. If the Rail Sample extends beyond the door stop (figure 1), then Rail Trim Molding is required to support the Rail (figure 2).



Sill Adapter & Rail Trim Molding Measuring • Cutting • Installing

The following procedure applies to both **Single** and **Double** door applications.

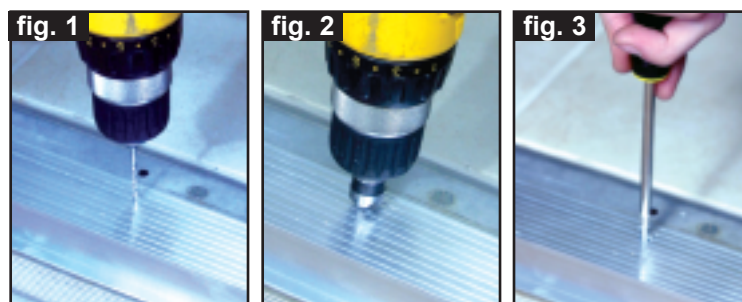
1. For Rail Trim Molding, measure from door stop to door stop, as illustrated below.



2. Repeat process at the bottom for Sill Adapter measurement.
3. Use measurements above for cutting Top Molding and Sill Adapter.

Sill Adapter Installation

1. Place cut length of Sill Adapter on existing Sill.
2. Drill 7/64" pilot holes at equal distances through Sill Adapter and into existing sill (figure 1).
3. Countersink drilled holes on Sill Adapter (figure 2).
4. Install #8 x 3/4" or #8 x 1-3/4" screws as necessary (fig. 3).



Rail Trim Molding Installation

1. Place cut length of Rail Trim Molding on top door stop.
2. Drill 7/64" pilot holes at equal distances through Rail Trim Molding and into top door stop (figure 1).
3. Countersink drilled holes on Rail Trim Molding (figure 2).
4. Install #8 x 3/4" or #8 x 1-3/4" screws as necessary (fig. 3).



Double Door System Installation

Left Door

1. Locate mounting position and fit on door frame (figure 1).
2. Using a 7/64" drill bit, mark for pilot hole location (figure 2) using the Housing Cap's mounting hole as a guide.
3. Remove unit and drill pilot hole (figure 3).
4. Relocate door system and install #6 x 2-1/2" screw.



5. Position bottom of door system.
6. Repeat process for the bottom of system using step 2 from above (figure 4).
7. Move door system aside and drill pilot hole into Sill Adapter (figure 5).
8. Relocate door system and tighten all screws (top & bottom).



fig. 4

fig. 5

fig. 6

Right Door System

1. Repeat previous steps 1-8 for installation of the right door.

System Alignment & Rail

1. Verify That BOTH Housings are 90° with Sill Adapter (fig. 1-A).
2. Measure distance between Top of Left Housing to Right Housing (figure 1-B).
3. Measure distance between bottom of Left Housing to Right Housing (figure 1-C).
4. Adjust Doors so top measurement equals bottom measurement.



Measurement from steps above is used for **Top and Bottom Rail cut lengths.**

5. Measure and cut Rails to size.

Rail Installation

1. Insert Rail into Left Bottom Pull Bar Guide (figure 1).
2. Carefully slide Rail into Housing Cap rail support (figure 2).



fig. 1

fig. 2

3. Remove Bottom Right Housing mounting screw.
4. Carefully pull Right Housing back and insert rail into Pull Bar guide (figure 3) and into Housing Rail Support.
5. Relocate Right Housing on Sill Adapter and re-install mounting screw (figure 4).
6. Repeat process for the top using Steps 3 & 4 above.
7. Drill 7/64" pilot holes through Rail and into Sill Adapter/Top Rail Molding using the rail mounting hole in Housing Caps as guides then install #6 x 3/4" self tapping screws (fig. 5 & 6).



fig. 3

fig. 4



fig. 5

fig. 6

IMPORTANT:
Apply a thin coat of **Silicone Spray** lubricant to top and bottom Rails and check for smooth operation.



Handle Installation

Handles can be placed anywhere along the height of the **Pull Bar**. Locate handle so it will not interfere with the existing door's handle or hardware.

1. Using handle as template, mark holes on **Pull Bar** (fig. 1).
2. Drill 1/8" hole **straight through Pull Bar** (figure 2)
3. Install **Handles** using provided # 6 x 1-3/4" screws (fig. 3).
4. Install Handle Screw Hole Plugs (2).
5. Repeat above steps for other door.

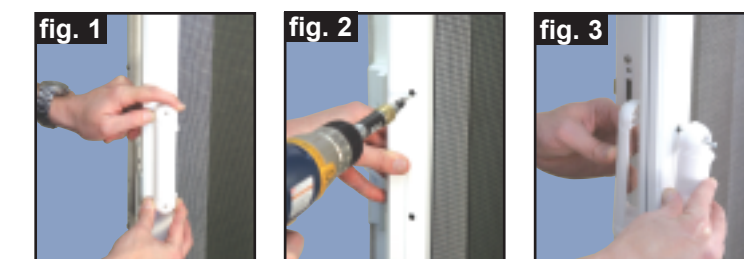


fig. 1

fig. 2

fig. 3

Magnet Installation

1. Position Magnet assembly and Drill 7/64" pilot hole into Pull Bar using Magnet screw hole as guide (figure 1).
2. Install #6 x 3/4" screws (figure 2).
3. Position opposing magnet (figure 3).
4. Repeat steps 1 & 2 above.

NOTE: Check polarity of magnets, if they repel reverse them.

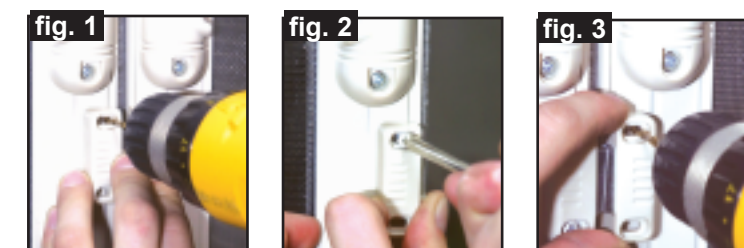


fig. 1

fig. 2

fig. 3

French Door Slide Bolt Installation

Note: Install Slide Bolts on Pull Bar located on side of inactive door.

1. Position Slide Bolt on Pull Bar 1/2" above threshold (fig. 1) and Drill 7/64" pilot holes into the Pull Bar using Slide Bolt as guide (figure 2).
2. Install #6 x 3/4" screws.
3. Repeat steps 1 - 3 above for top Slide Bolt
4. Center Pull Bars in door opening. Mark hole positions on Sill Adapter and Top Rail Molding (figures 3 & 4).
5. Drill 7/32" plunge holes for Slide Bolts.

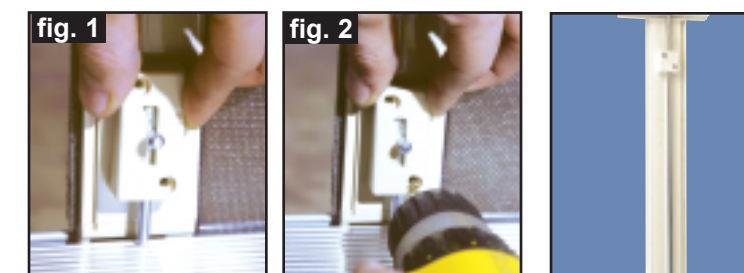


fig. 1

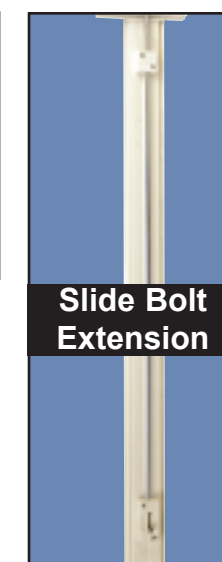
fig. 2



fig. 3

fig. 4

An optional **Slide Bolt Extension** is available for 98" tall systems consisting of a long Slide Bolt and Guide Block (Right)



Slide Bolt Extension